

Description

The FOC series E-Type Pressure Regulating Valve (PRV) is designed to maintain a uniform firefighting pressure at any hydrant, regardless of its location in the fire protection system. The valve is easily adjustable on-site to meet specific floor-level pressure requirements. It features a 2½" BS336 outlet and is available with threaded or flanged inlet options. Commonly installed in high-rise buildings and wet riser systems, the valve ensures consistent pressure, making it suitable for both on-shore and off-shore fire protection applications.

Features

- Inlet pressure up to 20bar
- Outlet static pressure from 5bar to 8bar
- Inlet options: threaded or flanged
- Copper alloy valve body for enhanced durability
- Surface treatment options: red coated, red painted, or natural brass



FOC-HV-PRO1



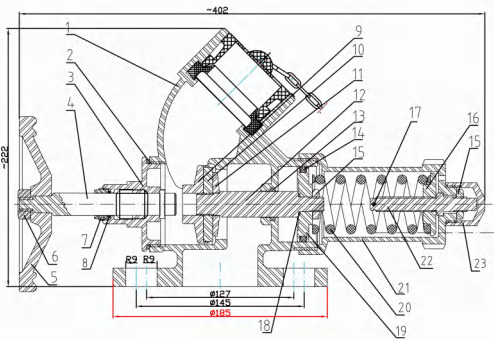
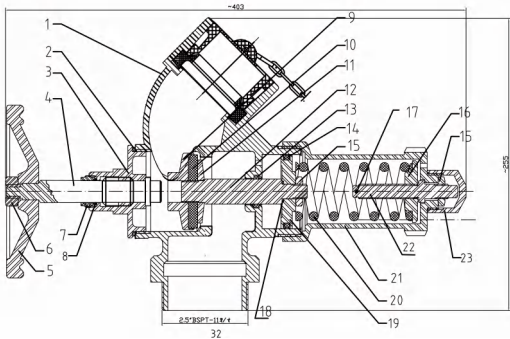
FOC-HV-PRO2

Technical Specifications

Model	FOC-HV-PRO1-PM	FOC-HV-PRO1-TM	FOC-HV-PRO2-F50	FOC-HV-PRO2-F65
Valve Type	Pressure Regulating, Oblique			
Inlet	2.5" BSP Male	2.5" BSPT Male	DN50 Flange	DN65 Flange
Outlet	2.5" BS336			
Working Pressure	20 Bar			
Testing Pressure	30 Bar			
Outlet Static Pressure	5 Bar-8 Bar			
Surface Treatment	Red coated, red painted, natural brass			

Note: For other customization requirements, please directly contact FOCUSMASTER team.

Dimensions



Inlet	W(mm)	H(mm)
2.5"BSP Male	255	403
2.5"BSPT Male	255	403

Inlet	W(mm)	H(mm)
DN50 Flange	222	402
DN65 Flange	222	402

Main Material

No.	Part	Material
1	Valve body	Copper Alloy
2	Gasket	PTFE
3	Seat	Brass
4	Stem	Brass
5	Handwheel	Gray Cast Iron
9	Valve core	Brass
20	Spring	Spring Steel
32	Cap	ABS / Brass
33	Chain	SUS304